

# POWER TOOLS 12V DRILL DRIVER



# WESCO® NEW TOOL OVERVIEW WS2550K

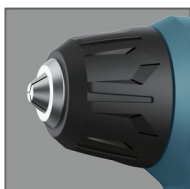
## FEATURES

- Rubber over mould grip
- Battery capacity indicator
- Forward and reverse rotation
- LED light
- Single speed
- LED charging indicator

## SPECIFICATIONS

<b>Chuck capacity</b>	.....	10mm
<b>Max torque</b>	.....	12 N.m
<b>Battery Capacity</b>	.....	1.3Ah Li-ion Mingyang
<b>Charging time</b>	.....	5hr
<b>No Load Speed</b>	.....	0-750/min
<b>Max drilling capacity in wood</b>	.....	15mm
<b>Max drilling capacity in steel</b>	.....	6mm

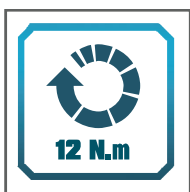
## PRODUCT HIGHLIGHTS



**Chuck capacity**  
10mm



**Two directions**  
Forward and reverse rotation



**MAX torque**  
Maximum torque: 12N.M



**LED light**  
LED charging indicator

## PACKAGE INFORMATION

**Package Type:** Color box

<b>Machine</b>	Length/Width/Height:	160/65/192mm
	Net/ Gross Weight:	0.84/0.84kg
<b>Color box</b>	Length/Width/Height:	280/205/82mm
	Net/ Gross Weight:	0.86/1.45kg
<b>Out carton</b>	Length/Width/Height:	450/305/300mm
	Net/ Gross Weight:	8.7/9.5kg
	No. Of Units in Outer Carton:	6pcs

**CBM**  
No. of Units Per Container Type w/o Palletization

<b>20'</b>	3990pcs
<b>40'</b>	8148pcs
<b>40'HC</b>	9312pcs

## STANDARD EQUIPMENT

- 5hr Charger ..... 1
- Magnetic holder ..... 1
- 25mm Drill bits ..... 10
- HSS drill bit (4mm/6mm) ..... 2
- Transparent box + color sticker



All specifications subject to change without prior notice. All models and accessories subject to stock on hand.

Positec Technology(China) Co.,Ltd.  
+0086-512-65152888 Ext:2549

**Wesco-tools.com**